



# Next Generation Standard for Intermittent Hot Foil Coder

Intermittent hot foil coder series are remodeled. By reviewing the conventional machine from the basic design, high quality and high performance have been realized.

## All-in-one Body

All-in-one body with control unit and operation panel mounted in the main body. It is lightweight, and compact design suitable for mounting on packaging machines.

## Digital Parameter Control

Various parameters such as tape feeding amount, printing time, type temperature are digitally controlled. Equipment operational stability, reproducibility at change of setting have been realized.

## Digital Temperature Control

The time to reach the printable temperature at the time of turning at power on and the time of type replacement is greatly shortened. Contributing to downtime reduction.

## Segmented Device State Management

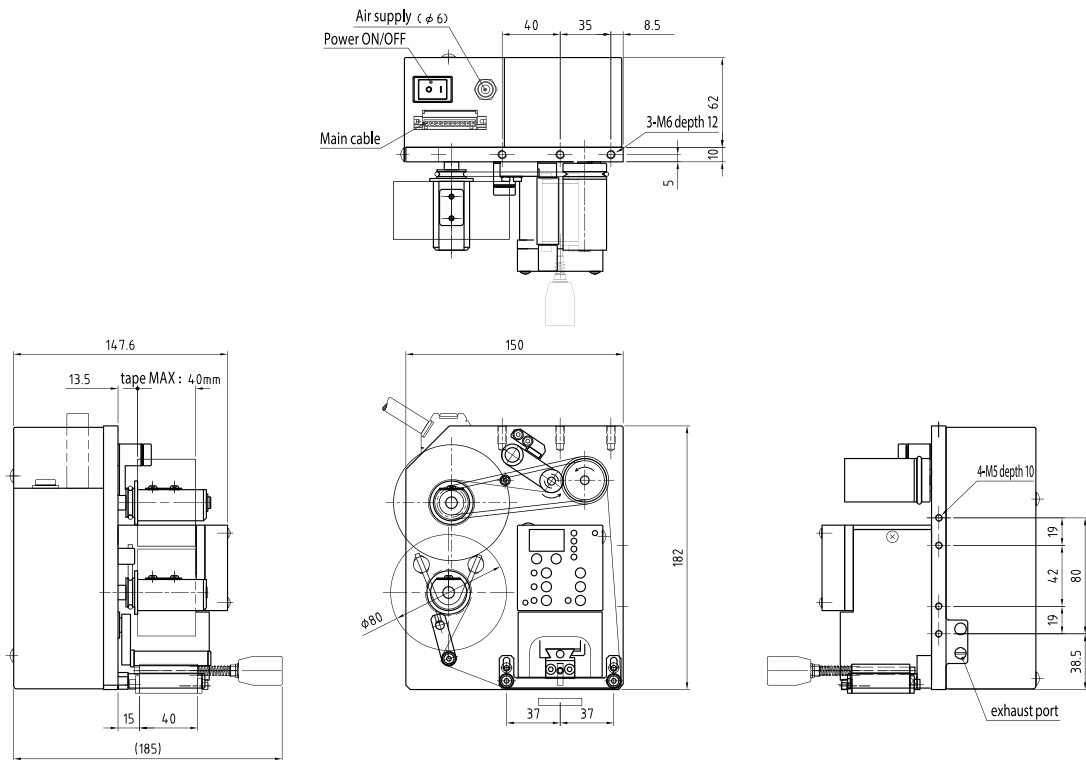
When a device error occurs, a detailed error code is displayed on the operation panel. Because it is easier to investigate the cause of the error, it is easier to recover the equipment.

## SPECIFICATION

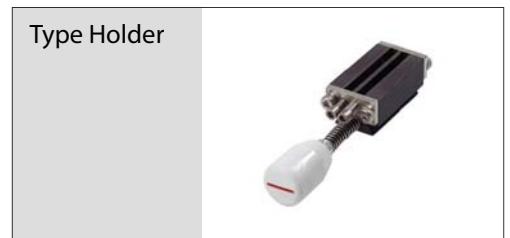
|                       |  |                              |  |
|-----------------------|--|------------------------------|--|
| Model                 | HP2200   | Maximum Number of Type Lane  | 4 lanes                                      |
| Type                  | Intermittent   | Maximum Print Range (Width)  | 22mm<br>(at print across web flow direction) |
| Drive Method          | Air Cylinder   | Temperature Adjustment Range | 100°C-200°C                                  |
| Maximum Print Speed   | 250 shots/min<br>(at foil advance of 12mm and printing time of 50ms) | Printing Time                | 10ms-990ms                                   |
|                       |  | Power Supply                 | DC24V · 120VA                                |
| Foil Advance          | 3mm-30mm   | Air Pressure                 | 0.3MPa-0.6MPa (clean air)                    |
| Foil Width            | 15mm-40mm  | Air Consumption Amount       | 12L/min (ANR)                                |
| Foil Length           | 100m / 150m  | Alarm                        | 24 types                                     |
| Operating Environment | Temperature : 5°C-40°C Humidity : Under 90%RH (no dew condensation)  |                              |  |

The specification may differ from conditions of use. Specification and other information are subject to change without notice.

## ■ Outline Dimensional Drawing



## ■ Options



**EDM CORPORATION**

5-2,3-Chome Itabashi, Itabashi-ku, Tokyo, Japan

TEL : +81-3-3964-4852 FAX : +81-3-3962-1277

URL : <https://www.edm-net.co.jp/>

Agency