

Dual continuous thermal transfer overprinter

DT2000c

TTO with "zero" downtime without stopping the production line



**A dual thermal transfer overprinter with two printer units
in the same space as a conventional continuous TTO.
When one ribbon finishes, it automatically switches to the other printer section,
reducing downtime for ribbon replacement to zero.
Our new generation printer standard "Generation 3" model.**

Generation

3

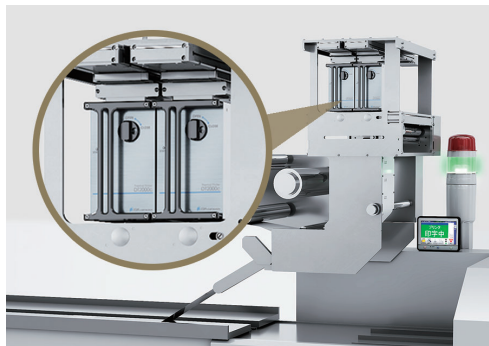
Print resolution
300dpi

Maximum printing speed
25m/min

Maximum printing area
53mm(W) × 150mm(L)

Generation 3 refers to our new generation of printers that have achieved higher performance than previous models.

Features



Achieves printing for two machines in the space of one conventional machine

This is a TTO with a space-saving printer unit that fits two sets of printer units in the space of one conventional model.

Two printers can be controlled simultaneously with a single control system

Each signal input/output is integrated into a single system for processing that is no different from that of conventional machines, allowing one control terminal to operate a single printer at the same time.

"Two modes" to meet the needs of production sites

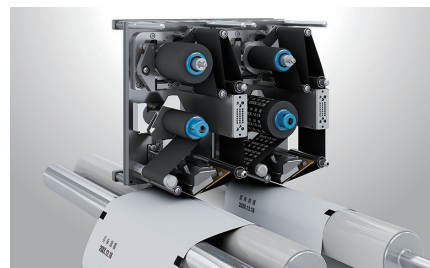
1

Non-stop mode

Automatic printer switching function that reduces downtime when replacing ribbons to "zero"

Automatically measures the amount of ribbon remaining and automatically switches between the two printer units.

The cassette in the printer section that is not printing can be removed and the ribbon replaced even during operation, achieving zero downtime due to thermal ribbon replacement.

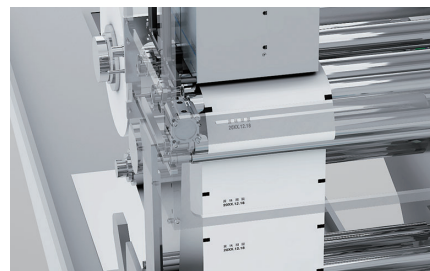


2

Twin mode

Achieving a higher degree of printing freedom by setting individual settings for each of the two printer units

By operating two sets of printer units alternately, it supports "small pitch printing", which was difficult with a single conventional machine.



Newly designed modular cassette unit that increases production efficiency

Improved print head maintainability

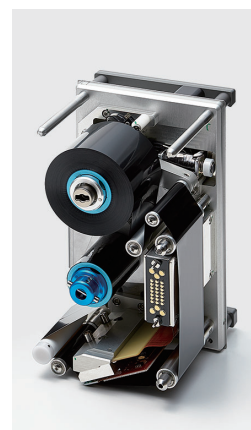
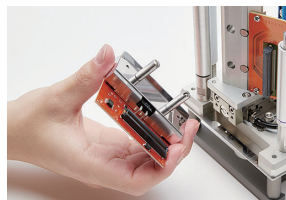
A print head module is installed on the cassette side. When in non-stop mode, you can safely and reliably perform maintenance at hand by removing cassettes without stopping the production line even while the production line is running.



One-touch head replacement

A magnetic type is used for attaching and detaching the print head. One-touch replacement is possible, greatly improving the work efficiency of print head replacement.

There is no risk of losing parts such as screws during work.



The contents are subject to change without notice. The specifications in this catalog may differ depending on usage conditions, installation conditions, mounting hardware specifications, environment, etc.



5-2, 3-Chome Itabashi, Itabashi-ku, Tokyo 173-0004 Japan

Website : <https://www.edm-net.co.jp/eng/>

Phone : +81-3-3964-4852 FAX : +81-3-3962-1277

E-mail : inquiry@edm-net.co.jp

Agency